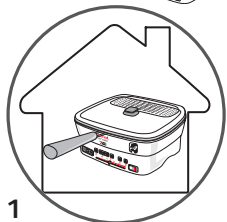


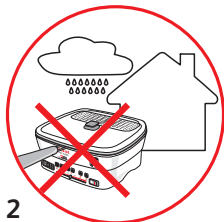
Tefal®

VERSALIO



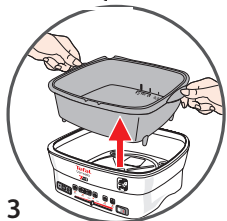


1

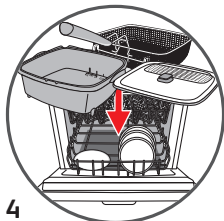


2

1



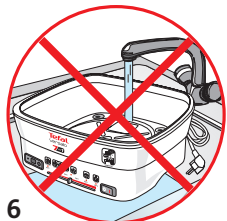
3



4



5



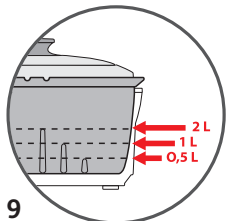
6



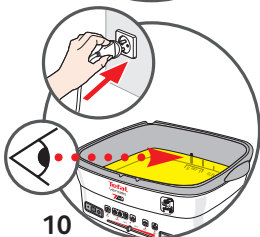
7



8



9



10

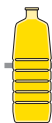
2



Fry



Deep fry



0,5 L

Fry

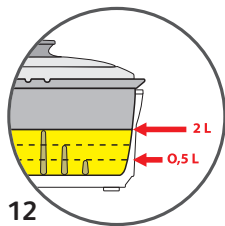


2 L

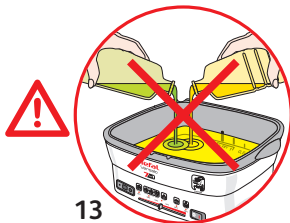
Deep fry



11



12



13



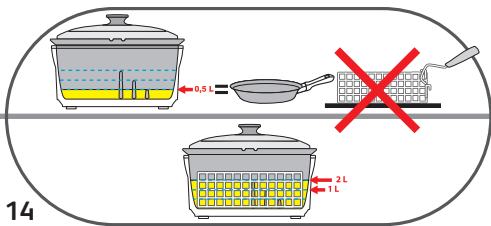
< 0,5 L

Fry



1 L → 2 L

Deep fry

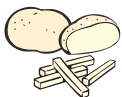


14

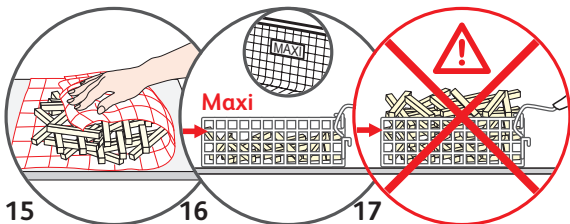
3



Deep fry



Max 1000 g



15

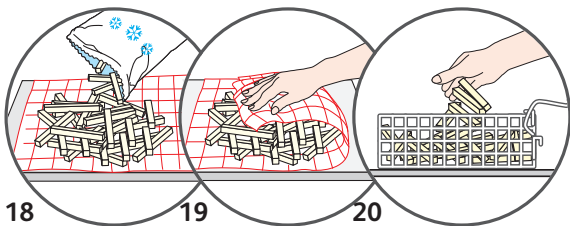
16

17

* * *



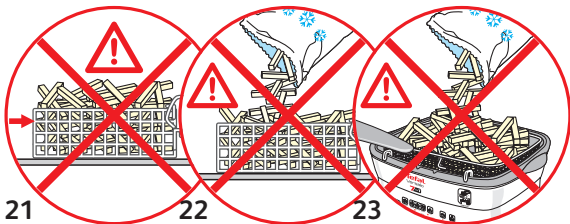
Max 750 g



18

19

20



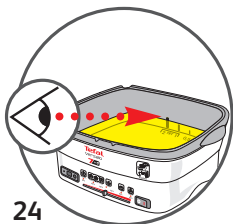
21

22

23



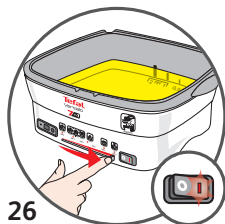
Deep fry



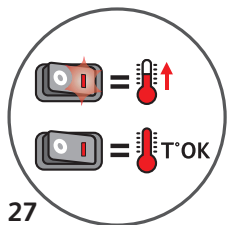
24



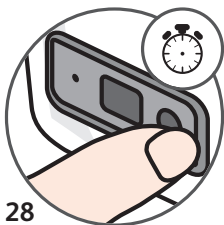
25



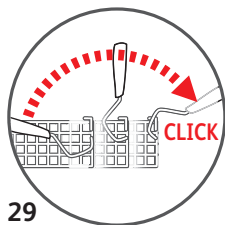
26



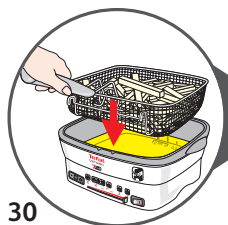
27



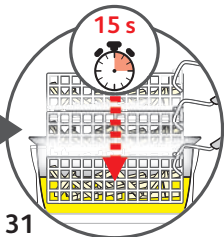
28



29



30



31



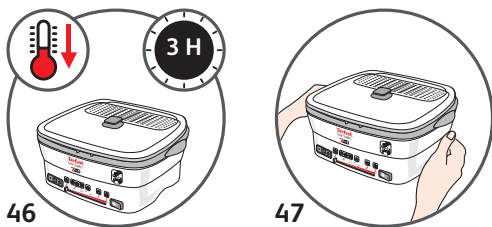
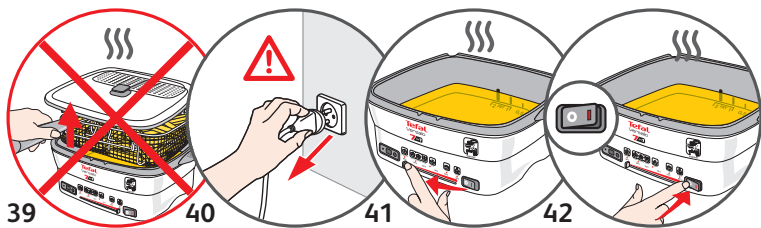
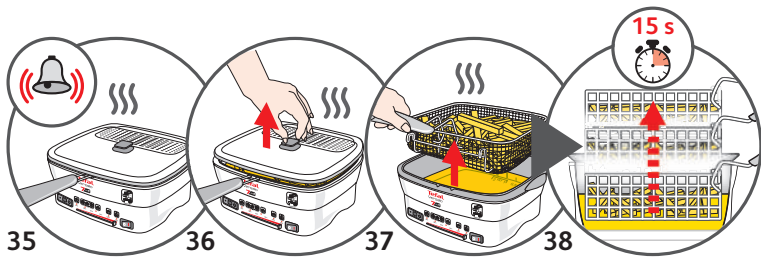
32



33



34









5 Deep fry / 180 °C



Deep fry








| | | | | |
|---|---|---|---|--|
|  2 L maxi |  |  |  | |
|  | 1000 g | 15-16 min | 4 | |
| | 550 g | 10-11 min | | |
|  | 750 g | 13-14 min | | |
| | 400 g | 7-8 min | | |



6 Fry / 160 °C



Fry

| | | | |
|---|---|---|--|
|  0,5 L maxi |  |  | |
|  | 15 min | 4 | |
|  | 30 min | 6 | |



7 Sauté / 130 °C



Sauté

| | | |
|----|--------|---|
| | | |
| x1 | 10 min | 4 |



8 Simmer / 100 °C



Simmer

| | |
|--------|---|
| | |
| 30 min | 4 |



9**Boil/Pasta**

Boil/Pasta

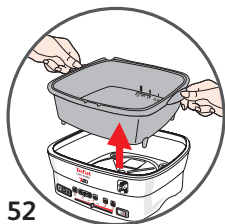
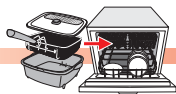
| | |
|--|---|
|  |  |
| 30 min | 4 |

**10****Braise**

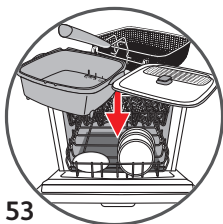
Braise

| | |
|--|---|
|  |  |
| 40 min | 4 |

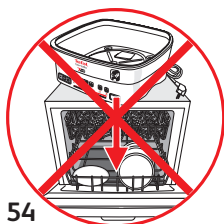




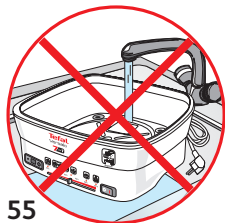
52



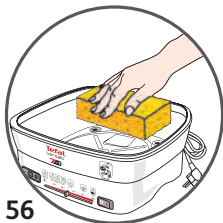
53



54



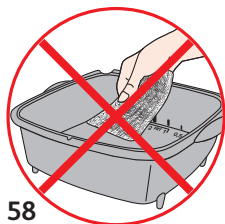
55



56

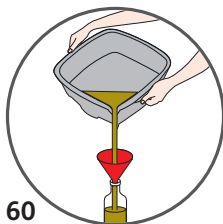
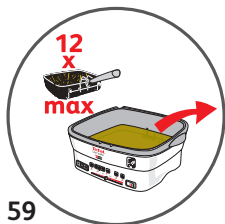


57

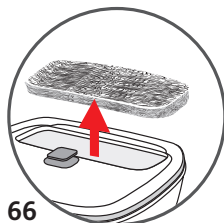
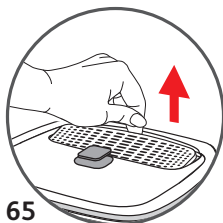



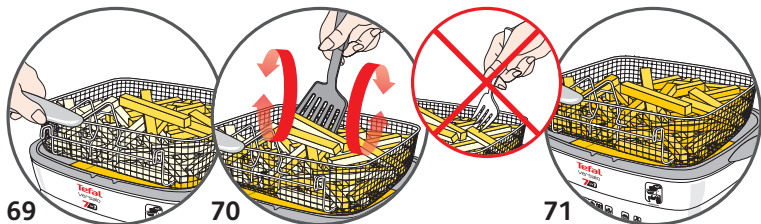
58

12



13

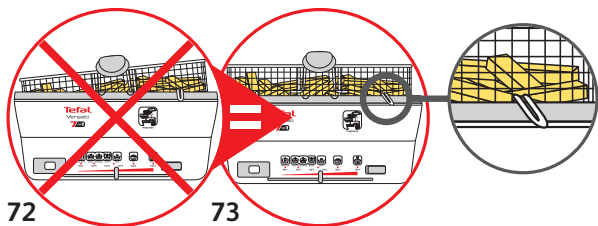




69

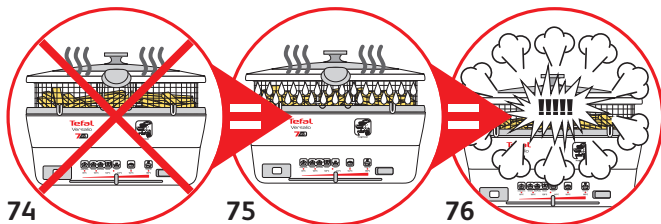
70

71



72

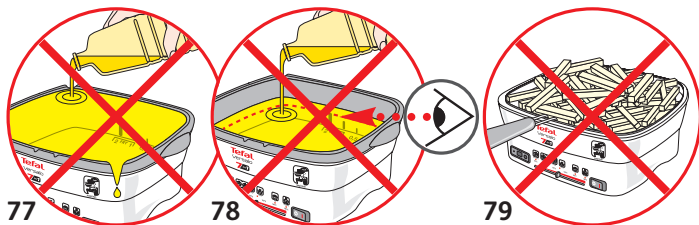
73



74

75

76



77

78

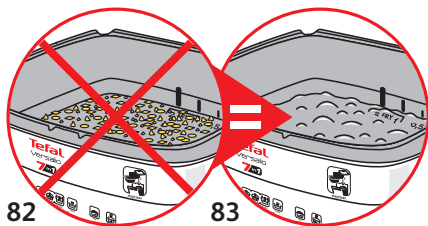
79



80



81



82

83

