



PRODUCT SHEET

# HEATING PAD

16784 IMETEC INTELLISENSE XL

# IMETEC INTELLISENSE XL

---

## WELLNESS AND COMFORT IN EXTRA LARGE SIZE WITH GOOD, INTELLIGENT HEAT

Intellisense XL by Imetec is the heating pad in Extra Large format with original Italian heating technology that gives well-being and comfort thanks to the good and intelligent heat and the multi-purpose shape that allows it to be used on different parts of the body.

The XL size makes it particularly effective for use on large areas such as the back.



# IMETEC INTELLISENSE XL

---

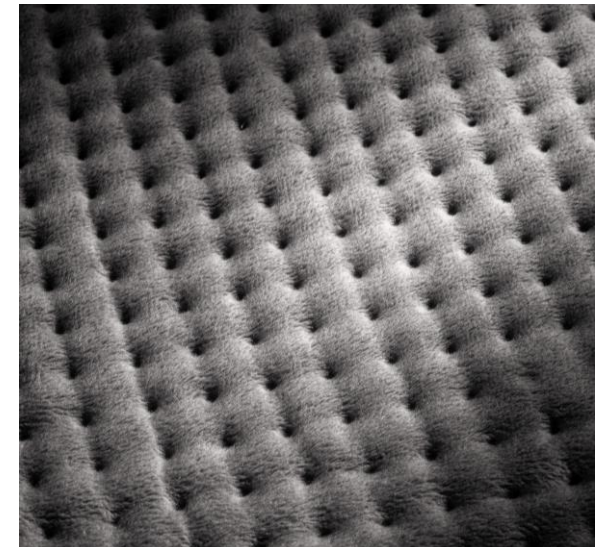
- **Intellisense Technology** Innovative technology that ensures maximum safety, low energy consumption and total comfort. Heats up in just 5 minutes. Checks the temperature 50 times per second.
- **Soft, warm, washable, non-allergenic and breathable smooth micro-plush** Pleasing to the touch, it relaxes and pampers
- **Dimensions 38x50cm** Extra Large size to ensure effective use on larger areas of the body such as the back or legs.



# IMETEC INTELLISENSE XL

---

- **5 Temperatures** to choose the desired heat level that best suits your needs
- **Auto shut-off after 3 hours** for maximum safety in case you leave the product on or fall asleep while using it
- **Electro Block Safety System** immediately intervenes and automatically switches off the product in the event of faults to ensure maximum safety
- **Washable at 30°C** in the washing machine to always have a soft and clean product
- **Detachable control unit** to allow the cleaning of the product



# TECHNICAL INFORMATION

---

<b>AESTHETICS</b>	Colour	Grey	
	Digital control and led with electronic control of the temperature	Yes	
	N° of temperatures	5	
	Detachable control unit	Yes	
<b>FEATURES</b>	Fast heat-up	Yes	
	Auto shut-off function	3 hours	
	Total Safety System Electro Block®:	SI	
	Fabric	Soft micro-plush	
	Washable	30°C	
	<b>ACCESSORIES</b>	Removable and washable cover	NO
Type code		R6703	
Power input (W)		110	
Voltage (V)		220-240	
Frequency (Hz)		50/60	
Power supply		cable	
<b>TECHNICAL FEATURES</b>		Cable length (m)	2,1
		Plug	Eur
	Overall dimensions of the product (cm) – lenght x width x height	38L x 50P x 1H	
	Product weight (kg)	0,550 kg ±1%	
	Product weight accessories excluded (kg)	-	
Approvals	CE-KEMA KEUR		



# TECHNICAL INFORMATION

---

<b>PACKAGING</b>	EAN code	8007403167844
	Dimensions (mm) - lenght x width x height	400x50x200 mm ± 2 mm
	Weight (kg)	-
	Box	PAP20_corrugated fibreboard: Recycle
Filling		
<b>MASTER CARTON</b>	Pieces per Master	6
	Box	PAP20_corrugated fibreboard: Recycle
	Dimensions (mm) - lenght x width x height	415x215x325 mm +3/-2 mm
	Weight	4,5 kg ±2%
<b>ALTRE INFORMAZIONI</b>	Instruction manual	MI003874
	Languages instruction manual	IT-EN-FR-DE-ES-EL-CZ-SK-HU
	Warranty (years)	2

**IMETEC**

THANK YOU

